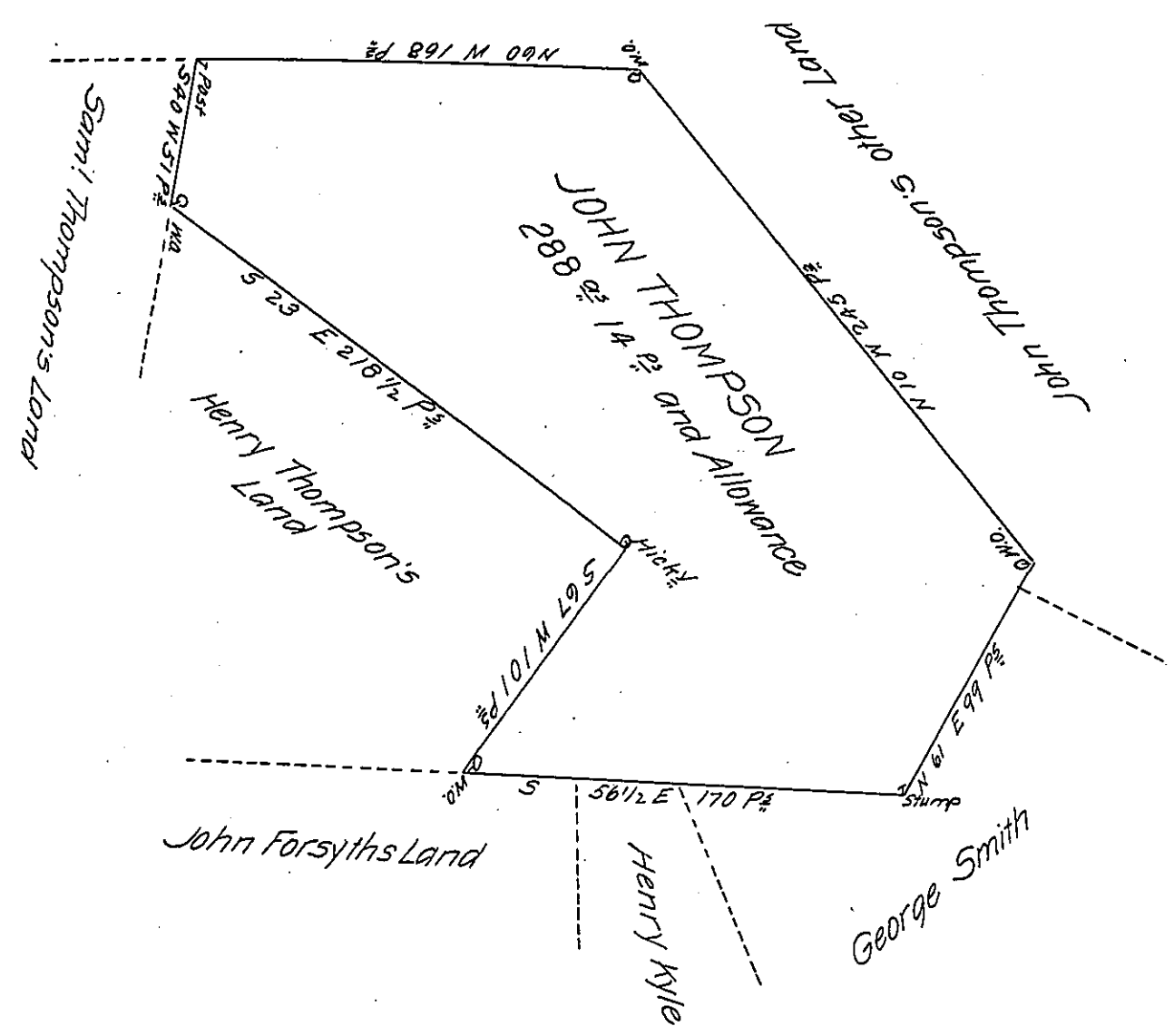


FORM NO. 1.



A Draught of a Tract of Land Situate in Gilford Townp Cumberland County Containing Two Hundred & Eighty eight Acres and fourteen Perches and the Usual Allowance of Six P Cent for Roads &c Survey'd May 12<sup>th</sup> 1769 for John Thompson in Pursuance of the Honourable the Proprietaries Warrant Bearing Date the 14<sup>th</sup> Day of June 1768.

To John Lukens Esq. }  
 Surveyor Genl.

John Armstrong D.S.

IN TESTIMONY that the above is a copy of the original remaining on file in the Department of Internal Affairs of Pennsylvania, made conformably to an Act of Assembly approved the 16th day of February 1833, I have hereunto set my hand and caused the Seal of said Department to be affixed at Harrisburg, this twelfth day of March 1907

*Loac D Brown*  
 Secretary of Internal Affairs.